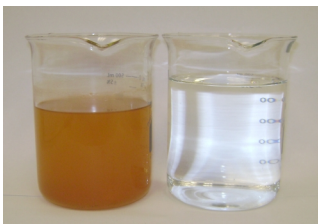


### Features

- Microcontroller based Constant Current Power Supply with LCD
- Transparent Tank for better visibility of process
- Discharge outlet for easy removal of sludge
- Aluminum and Stainless Steel Electrodes for comparative study
- Setup can be run without mains supply (optional Solar Panel)
- Online product tutorial



Waste Water and Treated Water

**Electrocoagulation** is the process of Destabilizing Suspended, Emulsified or Dissolved contaminants in an aqueous medium by introducing an electrical current into the medium. The electrical current provides the electromotive force to drive the chemical reactions. When reactions are driven or forced, the elements or compounds will approach the most stable state.

### Technical Specifications

#### Electrocoagulation Tank

Volume : 1L  
Material : Acrylic

#### Settlement Tank

Volume : 500ml  
Material : Acrylic  
Filters : Sand and Charcoal

#### Electrodes

Material : Aluminum and Stainless Steel  
Rod Dimensions (mm):8 x 310

#### Constant Current Power Supply

Current Range : 0-3.5A  
Output Voltage : 40V  
Display : LCD  
Input Supply : 230V  $\pm$ 10%, 50Hz