



Gauss & Tesla Meter

Nvis 621



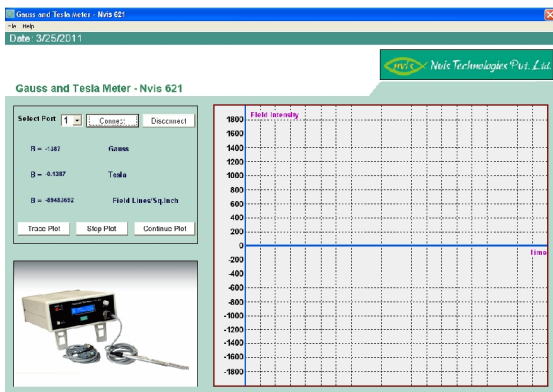
Nvis 621 Gauss and Tesla meter is used to measure the Magnetic Field Intensity. It operates on the principle of Hall Effect. It is highly accurate and stable instrument for the measurement of magnetic field. It measures the magnetic field with the help of InAs sensor. This instrument is very useful in different Industries, Research Institutes and Laboratories. InAs sensor is provided with a nonmagnetic casing for its safety. The readout is digital with Gauss and Tesla Unit.

Features

- Microcontroller based Instrument
- LCD screen
- PC Interface facility with run time graph plotter
- High Accurate InAs sensor
- Compact Size
- Indicates the direction of magnetic field

Technical Specifications

Range	: 0-2k Gauss (0-0.2 T) 2-20k Gauss (0.2-2 T)
Zeroing Adjustment	: By potentiometer
Display	: 16 x 2 Characters LCD
PC interface	: PC interface facility with run time graph plotter and a user friendly software
Sensor	: InAs sensor for better accuracy and stability
Accuracy	: ±3%
Sensor	: InAs sensor is provided for better accuracy and stability
Power Supply	: 230V ±10%, 50Hz
Dimension (mm)	: W 198 x D 285 x H 90



Application software window

Designed & Manufactured in India by

Nvis Technologies Pvt. Ltd.

141-A, Electronic Complex, Pardesipura, Indore-452010, India.

© +91-731-4211500, info@nvistech.com, www.NvisTech.com